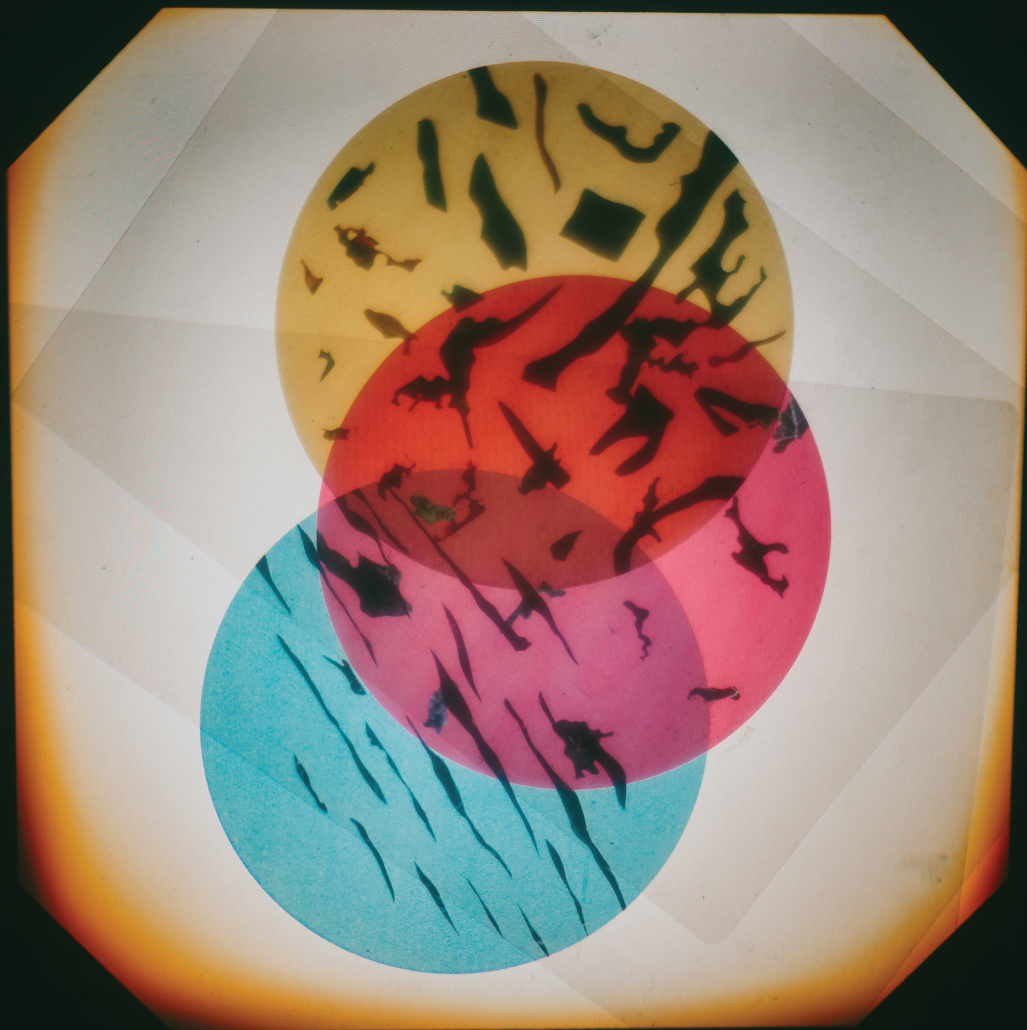


**AUT**

# **MATARIKI**

## **POSTGRADUATE EXHIBITION**



### **OPENING NIGHT**

**Friday 7 June, 5.30pm to 7.30pm**  
**St Paul St Galleries (WM and WB)**

### **EXHIBITION**

**Saturday 8 June, 12pm to 4pm**  
**Monday 10 to Friday 14 June, 10am to 5pm**  
**Saturday 15 June, 12pm to 4pm**

- St Paul St Galleries 1 and 2 (WM building)
- Test Space in WM201 (WM building)
- St Paul St Gallery 3 (WB building)
- Black Box live performance space in WG210 (WG building)

# MATARIKI

## POSTGRADUATE EXHIBITION MAP



### ST PAUL ST GALLERY 1

#### WM106

- Xavier Ellah
- Tori Mok
- Zeenia Irani
- James Waters
- Sida (Doris) Chen
- Holly Grover
- Ellen (Ellie) Crowe
- Charles Walker (Galleries 1 and 3)

### ST PAUL ST GALLERY 2

#### WM101

- Michelle Mayn
- Ellen Ransfield
- Frank Liu
- Quishile Charan

### TEST SPACE – WM201

- Shawn Wimalaratne

### WG210 – BLACK BOX LIVE PERFORMANCE

- Erena Donnelly

### ST PAUL ST GALLERY 3

#### WB239

- Mallory Allen
- John Salamini
- Mikaela Russell
- Abdlwahab (Abdul) Alkandary
- Jiashu Li
- Yaxiao (Irene) Li
- Charles Walker (Galleries 1 and 3)

### OFFSITE – CORBAN ESTATE ARTS CENTRE

- Hasitha Jayasinghe